



Toll Brothers
America's Luxury Home Builder™

WELLINGTON VIEW WEST PALM BEACH, FLORIDA

Wellington View - A luxurious West Palm Beach, Florida Single Family Home Community.

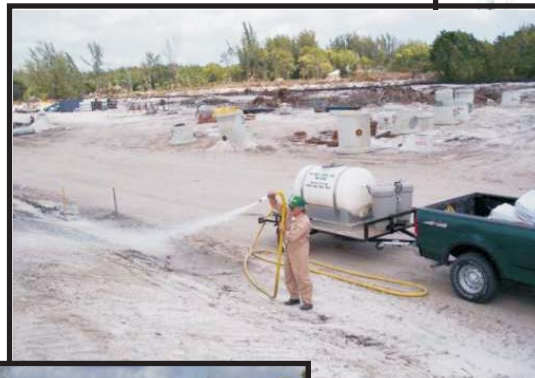
Wellington View is a private, gated community of 178 single-family homesites situated around nearly 80 acres of sparkling lakes and picturesque nature preserve areas. Residences range in size from approximately 2,850 to 4,600 square feet of air-conditioned living space, and include an array of outstanding features included with every home, including luxurious pool packages. Recreational amenities will include a clubhouse with fitness center, tennis court, and activity-filled tot lot, making Wellington View the perfect place for you and your family to enjoy a welcome feeling of luxury and relaxation with a true community feel.

Site Development Problem Erosion & Dust Control in Sugar Sand Problem Solved with Enviroseal LDC™

February 20th, 2004



February 20th, 2004



February 20th, 2004



March 23, 2004



April 18, 2004



May 30, 2004

Prior to our LDC Application some of the erosion ruts were over 12" deep. The ground slopes were dressed with a dozer and the LDC was spray applied at a rate of 55 gallons per surface acre. Total Rainfall during this period was 6.5 inches.

Manufactured By:

Enviroseal Corporation

1019-1021 SE Holbrook Ct. 772-335-3991

Port St. Lucie, FL 34952

email: sales@enviroseal.com

Summary				
Temperature	Max	Avg	Min	
Max Temperature	92 °F / 33 °C	79 °F / 26 °C	66 °F / 19 °C	
Mean Temperature	80 °F / 27 °C	72 °F / 21 °C	58 °F / 14 °C	
Min Temperature	73 °F / 23 °C	62 °F / 16 °C	47 °F / 8 °C	
Degree Days	Max	Avg	Min	Sum
Heating Degree Days (base 65)	7	1	0	23
Cooling Degree Days (base 65)	15	7	0	410
Growing Degree Days (base 50)	30	22	8	1284
Dew Point	Max	Avg	Min	
Dew Point	76 °F / 24 °C	60 °F / 16 °C	37 °F / 3 °C	
Precipitation	Max	Avg	Min	Sum
Precipitation	1.53 in / 3.9 cm	0.15 in / 0.6 cm	0.00 in / 0.0 cm	4.94 in / 12.55 cm
Snowdepth	0.0 in / 0 cm	0.0 in / 0 cm	0.0 in / 0 cm	-
Wind	Max	Avg	Min	
Wind	32 mph / 52 km/h	10 mph / 18 km/h	0 mph / 0 km/h	
Gust Wind	39 mph / 63 km/h	22 mph / 34 km/h	16 mph / 26 km/h	
Pressure	Max	Avg	Min	
Pressure	30.40 in / 1029 hPa	30.11 in / 1019 hPa	29.74 in / 1007 hPa	

The above is a summary of the actual weather conditions taken from the Palm Beach International Airport (PBI) issued by the National Weather Service for Feb 20 through June 15th, 2004. This LDC installation site is within 3 miles of PBI. The wind gusts on our brochure are what were registered at the site during our monitoring. There was a complete absence of airborne dust (PM-10) as would be indicated by the dozer tracks in the sand. This application has lasted in excess of 100 days and is expected to remain effective for up to 120 days. This particular application rate was made at eight fluid ounces per square yard (8oz/yd²) The Napa Valley vineyards in California have used a 40.1 ratio and have experienced no dust for their entire 2003 growing season. The above weather chart does not include the rain fall to date, June 15th, 2004. We have added an additional 8.5” of rain for a total now of 13.44 inches.